

# AIS Chart Plotter

## Model P200



GPS Antenna Unit (Option)  
Model GA-22

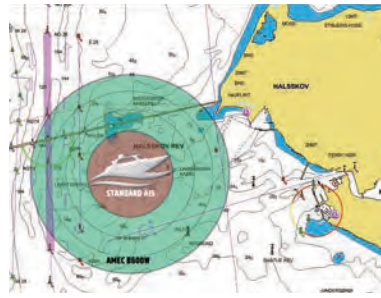


The Widelink P200 is an globally certified AIS chart plotter. The application running on P200 is the next milestone of AMEC’s software technology. It features a powerful charting engine with intuitive user interface and advanced navigation functions for enhanced safety and eased voyage. P200’s hardware with its IP67 waterproof and ergonomic interface ensures a reliable operation in rough marine environment.



## Superior Performance Guaranteed

P200 series' 5W transmission power enables bigger transmission range than the conventional 2W AIS class B. It's higher reporting rate and professional grade time division management make P200 an overall more advanced product compared to AIS CSTDMA class B.



P200 Tx range comparison with 2W AIS class B



Powerful 72-channel high speed GNSS receiver supporting GPS and GLONASS

## See and to Be Seen

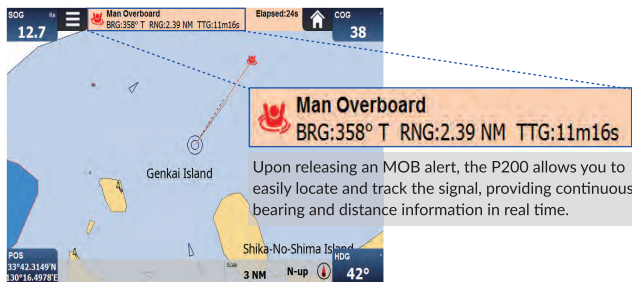
Chart view and plot view give an enhanced situational awareness at sea with an unlimited number of AIS target display.



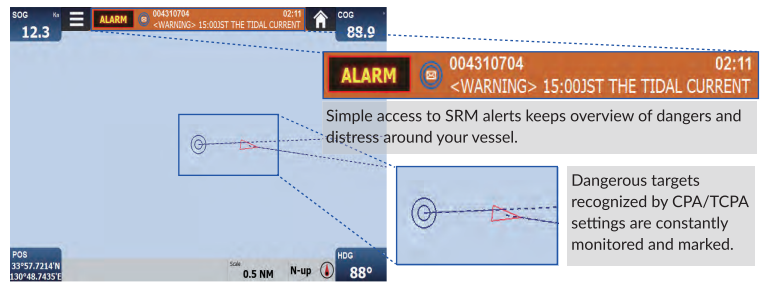
AIS targets on C-MAP 4D chart



AIS targets on plot view





AIS MOB/SART alert easy to track



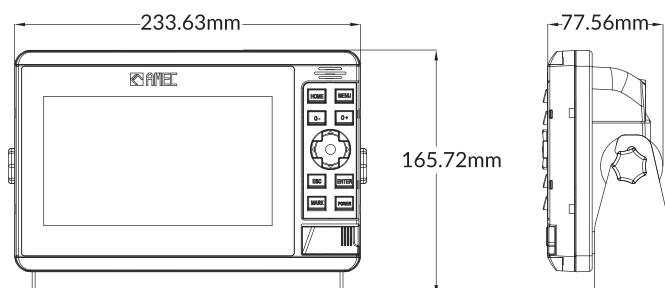
Keep your eyes on dangerous targets



# Technical Specifications

AIS Chart Plotter		
	P200-SO	P200-CS
		
<b>STANDARDS</b>		
	IEC 62287-2 Ed.2: 2017	IEC 62287-1 Ed.3:2017
	IEC 61108-1 Ed.2: 2003 IEC 60945 Ed.4: 2002 ITU-R M.1371-5, 2014	
<b>VHF TRANSCEIVER</b>		
Frequency Range	156.025 MHz ~ 162.025 MHz	
Access Scheme	SOTDMA	CSTDMA
Tx Output Power	1W or 5W (30 dBm or 37 dBm +/- 1.5 dB)	2W (33 dBm +/- 1.5 dB)
Receive Sensitivity	better than -107 dBm @ 20% PER	
<b>GNSS RECEIVER (integrated)</b>		
Receiving Channels	72 channels	50 channels
Position Accuracy	IEC 61108-1 compliant	IEC 61108-1 compliant
Time to First Fix	< 60s	< 60s
<b>LED DISPLAY</b>		
Display Size	7 inches	
Screen Brightness	850 nits	
Display Resolution	1024x600	
<b>CONNECTION INTERFACE</b>		
VHF Antenna Connector	SO-239 (female)	
GPS Antenna Connector	TNC (female)	
NMEA 0183 Connector	12 pins (with 8 wires connecting to external device)	
NMEA 2000 Connector	5 pins, standard connector LEN=1	
Ethernet Port (cable w/ RJ45)	Optional	Optional
Wi-Fi Connectivity	Optional	Optional
<b>ENVIRONMENTAL</b>		
Operating Temperature	-15 C to +55 C	
Waterproof Rating	IP67 with SD card door closed	
<b>POWER SUPPLY</b>		
Power Input / Current (Max)	12-24 VDC / 1.1-0.7A max	12-24 VDC / 2.3-1.9A max

## DIMENSION DRAWINGS



**Alltek Marine Electronics Corporation**

[www.alltekmarine.com](http://www.alltekmarine.com)

14F-2, No. 237, Sec. 1, Datong Rd., Xizhi Dist.,  
New Taipei City, 22161, Taiwan

Tel: +886 2 8691 8568 Fax: +886 2 8691 9569