



Vessel Monitoring System

Quick Start Guide

WHEREVER YOU GO
SkyMate
SERIES

SkyMate, Inc.
100-11890 Sunrise Valley Drive
Reston, VA 20191, USA

Toll-free: 1-866-SkyMate
Phone: 1-703-961-5800
Email: support@skymate.com

www.skymate.com

Disclaimer

SkyMate warrants to the User, that the equipment will be free from defects in materials and workmanship for a period of twelve months (Warranty Period) from the date you received delivery of the system. If the equipment is not installed by a Certified Marine Technician, and the User has not obtained SkyMate's system installation approval, the above Warranty Period will be reduced to three months.

SkyMate is a trademark of SkyMate, Inc., registered in the U.S.
©2017 SkyMate, Inc. All rights reserved.

What's in the i1500 box?

- 1**

Base Unit (i1500) + **Power Cable (2m)** + **Data Cable (2m)** + **Install Kit #1**
- 2**

Antenna + **RF Cable (6m)** + **Install Kit #2**
- 3**

Keypad (KPD-150) with Keypad Cable (2m) + **Install Kit #3**
- 4**

Tablet (Android) + **Bumper** + **Waterproof Pouch** + **Charger**

Quick Start

1. Connect to www.skymate.com/activation to activate.
2. Install the Base Unit (do not connect power until Step 5).
3. Install the Keypad.
4. Install the Antenna with an unobstructed view of the sky.
5. Connect the Base Unit to power.
6. Wi-Fi connect your Tablet to the Base Unit.
7. Launch VMS app.



A Activate your i1500 system

1. Get the system serial number from the retail box (side) or i1500 (bottom)

2. Connect any device with a browser to the Internet

a) Open a browser and go to www.skymate.com/activation

b) Follow the instructions to Activate.

3. An email is sent to you when you Activate which includes all your iSeries Credentials.

B Install your i1500 system

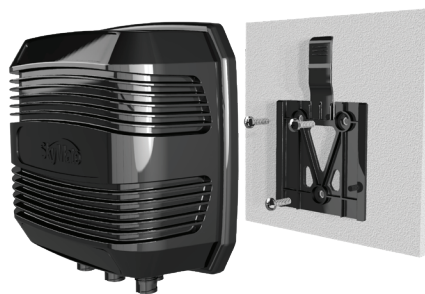
1. Install the Base Unit (i1500)

a) Select a dry location for the installation.

b) Secure the mounting bracket with the double-sided tape (already on the bracket) and/or using the screws provided.

c) Connect the Power Cable to the boat battery. Connect the red wire to positive (+) and the other two wires to negative (-).

Note: Do not connect the Power Cable to the Base Unit until Step 4.

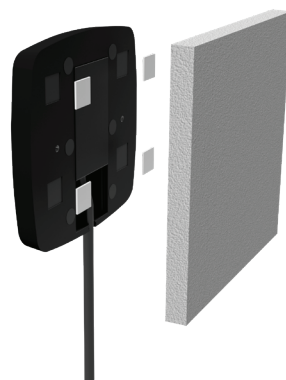


2. Install the Keypad (KPD-150)

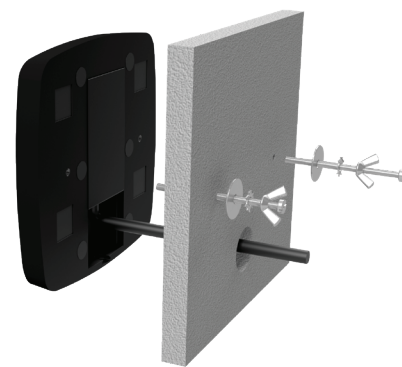
a) Select a panel location for the Keypad. It can be mounted using the tape on the back of it or be bolted.

b) If the Keypad is to be bolted, then drill the holes in the panel using the template provided. Secure it with the supplied wing nuts.

c) Connect the Keypad to the Base Unit.



Surface Mount



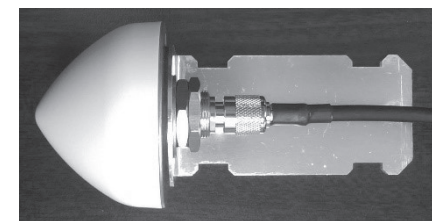
Through Hole

3. Install the Antenna

a) Attach the bracket to the antenna and then connect the RF cable to the antenna. This connection needs to be waterproofed (using the Install Kit).

b) Clean the antenna connector and cable connector using the alcohol wipes. Completely dry the connectors using the moisture absorbing cloth.

c) Wrap the black tape (from the metal can) around the antenna/cable connection. Peel off the white strip while wrapping. Make sure every turn overlaps. Do NOT stretch the tape. Wrap the tape right up to and around the hex nut.

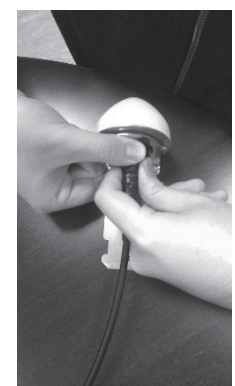


d) Use your hand to grab the wrapped tape. Apply pressure to mold the tape to the antenna cable and connector. Use your thumbs to press on the tape where the hex nuts are to fill the gap between the hex nut and the mounting bracket (or the mounting surface).

e) Install antenna with bracket with an unobstructed view of the sky. To avoid grounding issues, do not mount/connect the bracket to the metal chassis of the boat.

f) Route the RF cable to the Base Unit. This cable should not be cut. If required, contact SkyMate for a cable extension.

g) Connect the RF cable using the pigtail provided in the Install Kit. Put a small amount of glue on the connector threads to prevent the connections from loosening.



4. Power ON your i1500 system

a) Connect the Power Cable to the Base Unit. It will turn ON and self-test. Observe the front panel indicators and Keypad, as this is an indication of proper operation.

i. Within 3-10 minutes, the Iridium and GPS LEDs will be green.

ii. On the Keypad, only the SOS buttons will remain ON (dim).

b) With the Iridium and GPS LEDs green, the i1500 system has successfully powered ON and is ready for your tablet to Wi-Fi connect to it.

C Test your i1500 system

1. Wi-Fi connect your tablet to the Base Unit

a) The i1500 SSID is the last five digits of the Base Unit Serial Number. The default 8-digit Wi-Fi password is 000 followed by the SSID.

b) The VMS App login password is ndr.

2. Send/Receive email

a) Open your VMS app on the tablet and send a test email to test@skymate.com (this email will be echoed back to you).

b) Within a few minutes, the Keypad message waiting light will go ON.

c) Confirm that you received the test email response.